



USDA Foreign Agricultural Service utilizes -

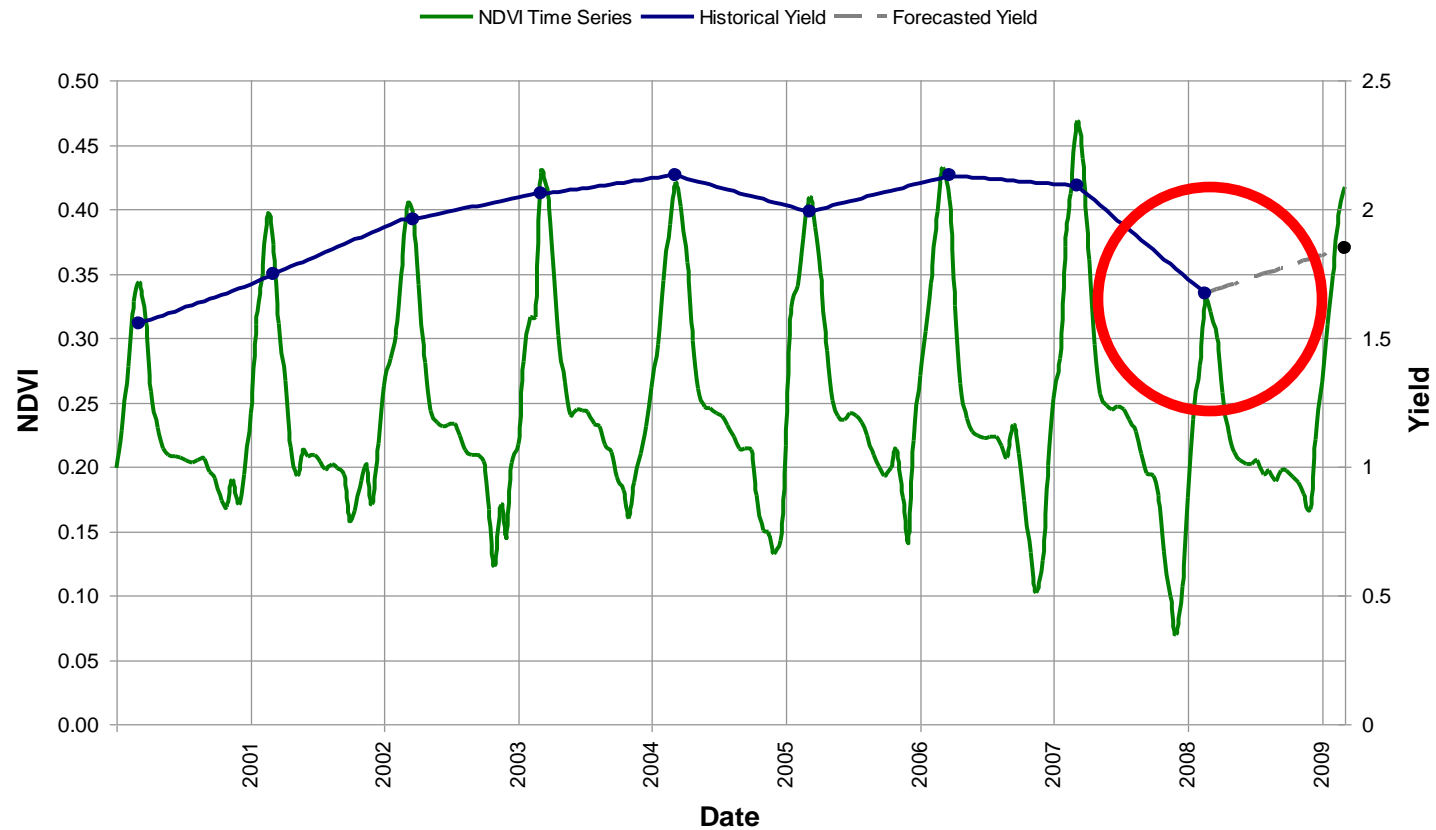
- satellite imagery
- weather data and
- other information

to estimate crop production and monitor agricultural drought in various countries around the world.

Agro-meteorological data are integrated with satellite imagery of different resolutions (high, medium, and low) as needed to answer key questions.

Iraq Drought 2008/09

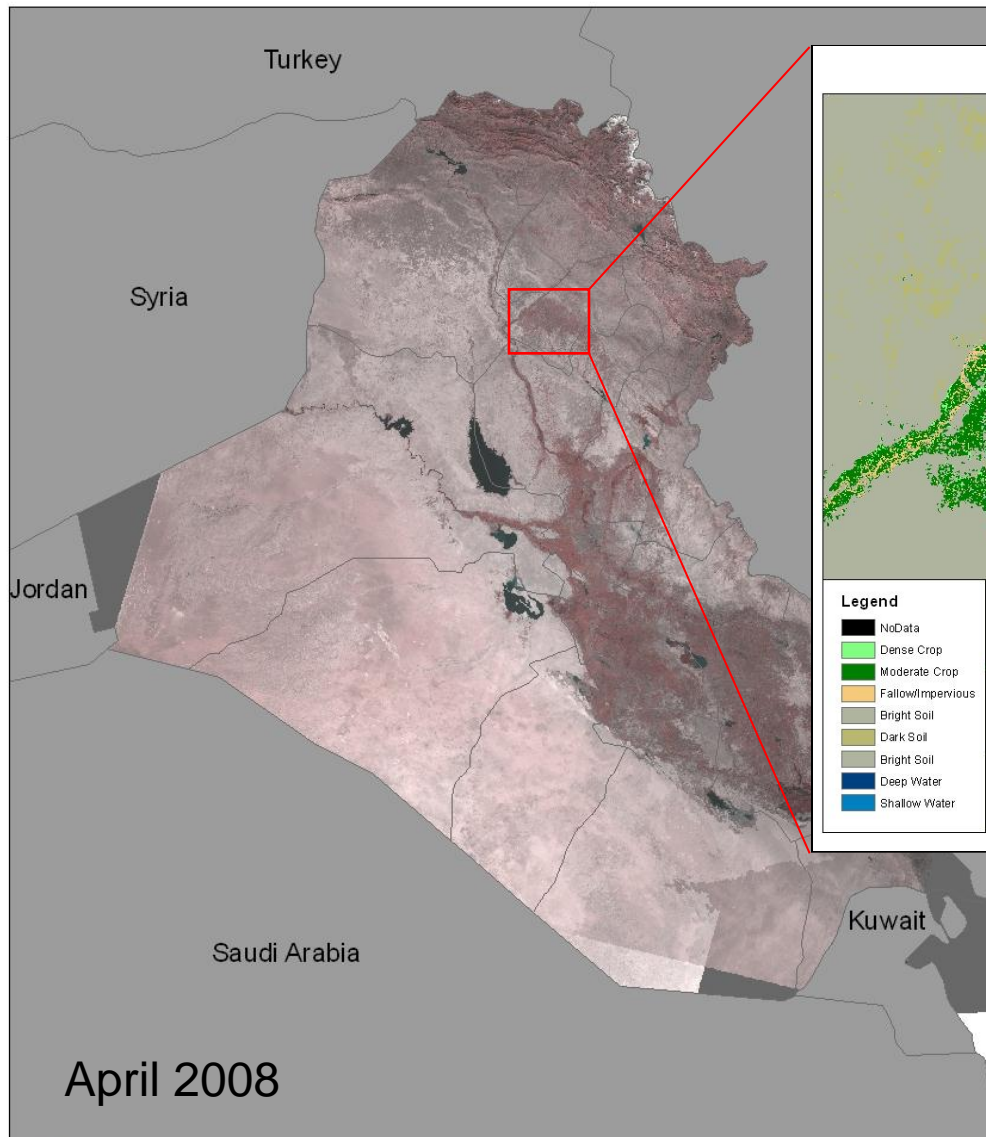
Hierarchy



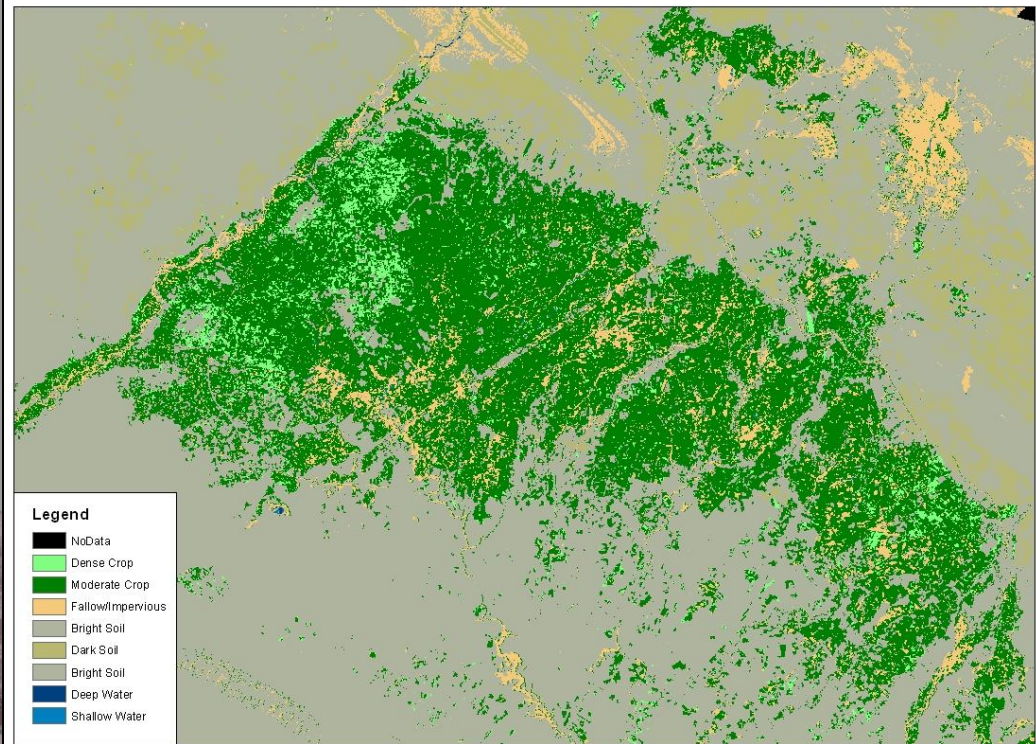
- high resolution for crop confirmation
- medium resolution for area calculation
- low resolution for time-series relative yield estimation (chart shows NDVI with historical crop yields)

Production Statistics: Area

GDA Corp: SASR Mosaic



Scene-based Classification: Decision Tree



USDA Produced Image Classification
(Dominant Crops)

[using classification techniques]





- USDA FAS provides readily accessible data products through Crop Explorer's global charts and maps of
 - Meteorological data from World Meteorological Organization (WMO) and US Air Force Weather Agency (AFWA).
 - Vegetation assessment (NDVI) data from NASA-MODIS, ESA-SPOT Vegetation

www.pecad.fas.usda.gov/cropexplorer

USDA FAS

Office of Capacity Building and Development

- Leads USDA's efforts to help developing countries build their agricultural systems and trade capacity
- Serves as a link to technical expertise available throughout USDA
- Facilitates expert consultations, customized trainings, specialized scientific exchanges, workshops
- Works with USAID, State Dept., U.N. agencies, international institutions and organizations, foreign governments
- Focal point for USDA collaboration with WBG under Water MOU

Contact info:

Robert Tetrault

robert.tetrault@fas.usda.gov

Otto Gonzalez

otto.gonzalez@fas.usda.gov

202 690-2919